



NOVA SCOTIA RISK SHARING POOL

JULY 2020 OPERATIONAL REPORT

ACTUARIAL HIGHLIGHTS

Related Bulletin: [F2020-060 Nova Scotia RSP July 2020 Operational Report](#)

For your convenience, bookmarks have been added to this document. To view them, please click on the BOOKMARK tab at the left.

Should you require any further information, please call Aidan Chen, AVP Data & Analytics at (416) 863-1750 x 4804.

ACTUARIAL HIGHLIGHTS**RSP NOVA SCOTIA****OPERATIONAL REPORT****JULY 2020**

TABLE OF CONTENTS

| | | |
|----------|---|-----------|
| 1 | Summary..... | 2 |
| 1.1 | Valuation Schedule (Fiscal Year 2020)..... | 2 |
| 1.2 | Appointed Actuary and Hybrid Actuarial Services Model..... | 2 |
| 1.3 | Consideration of Recent Legal Decisions and Changes in Legislation / Regulation | 3 |
| 1.4 | Current Provision Summary | 3 |
| 2 | Activity During the Month of July 2020 | 4 |
| 2.1 | Recorded Premium and Claims Activity | 4 |
| 2.1.a | Actual vs. Projected (AvsP): Earned Premium..... | 5 |
| 2.1.b | AvsP: Recorded Indemnity & Allowed Claims Expense | 6 |
| 2.1.c | AvsP: Paid Indemnity & Allowed Claims Expense | 9 |
| 2.2 | Actuarial Provisions..... | 10 |
| 3 | Ultimate Loss Ratio Matching Method..... | 12 |
| 4 | Calendar Year-to-Date Results..... | 12 |
| 5 | Current Operational Report – Additional Exhibits | 13 |
| 6 | EXHIBITS | 14 |

1 Summary

Key Points

- (a) The loss ratios currently being used include an initial assessment of the incurred impacts associated with the COVID-19 pandemic, with a further review and assessment to be included with the RSP 2020 Q2 actuarial valuation update (as at June 2020).

1.1 Valuation Schedule (Fiscal Year 2020)

The July 2020 Operational Report leverages actuarial assumptions consistent with last month (that is, it does not reflect the results of an updated valuation). The following table summarizes the valuation implementations scheduled for fiscal year 2020.

| NOVA SCOTIA RISK SHARING POOL FISCAL YEAR 2020 – SCHEDULE OF VALUATIONS | | | |
|--|----------------------------------|---------------------------|--|
| Valuation Date | Discount Rate (per annum) | Operational Report | Description of Changes |
| Sep. 30, 2019 (completed) | 1.46% mfad 25 bp | Oct. 2019 | updated valuation (roll forward) : accident year 2019 loss ratio <u>increased</u> 1.0 points to 97.8%; discount rate <u>increased</u> 5 basis points; no change to selected margins for adverse deviations |
| Dec. 31, 2019 (completed) | 1.64% mfad 25 bp | Mar. 2020 | update valuation: 2019 loss ratio <u>increased</u> 2.7 points to 100.5%; accident year 2020 loss ratio <u>increased</u> 4.5 points to 103.1%; discount rate <u>increased</u> 18 basis points; no change to selected margins for adverse deviations |
| Mar. 31, 2020 (completed) | 0.62% mfad -25 bp | May. 2020 | update valuation (partial roll-forward): accident year 2020 loss ratio <u>decreased</u> 3.5 points to 99.6%; discount rate <u>decreased</u> 102 basis points; no change to selected margins for adverse deviations |
| Jun. 30, 2020 | % mfad -- bp | Aug. 2020 | update valuation |
| Sep 30, 2020 | % mfad -- bp | Oct. 2020 | update valuation (roll-forward) |

Under the proposed schedule for fiscal year 2020, the off-half valuation quarters ending March 31, 2020 and September 30, 2020 would not reflect a full valuation update of assumptions, but would rather roll-forward key assumptions from the previous valuation. However, with disruption in the insurance environment from the COVID-19 pandemic, the valuation quarter ending March 31, 2020 includes a partial update of key assumptions to reflect this impact. Other assumptions are rolled-forward from the previous valuation.

1.2 Appointed Actuary and Hybrid Actuarial Services Model

Mr. Cosimo Pantaleo of Ernst & Young LLP (EY) was appointed as Actuary by the FA Board at its

February 18, 2020 meeting.

Facility Association operates under a hybrid model in relation to the management and provision of actuarial services. Under this model, actuarial services are performed by both Facility Association's internal staff and its external actuarial consulting firm. The hybrid model approach maximizes the efficiency of resource allocation while providing access to additional expertise and capacity as needed.

1.3 Consideration of Recent Legal Decisions and Changes in Legislation / Regulation¹

There have been no changes in these descriptions since last month's Highlights.

Consideration and assessment of potential impacts of legal decisions and changes in legislation / regulation constitutes a regular part of the valuation process. Descriptions of some of the more recent (i.e. within the last five years) changes are provided below.

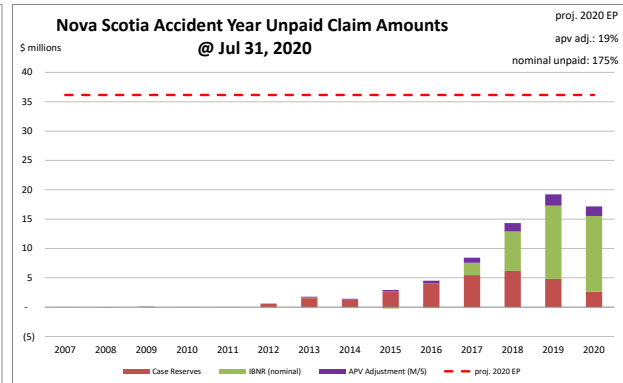
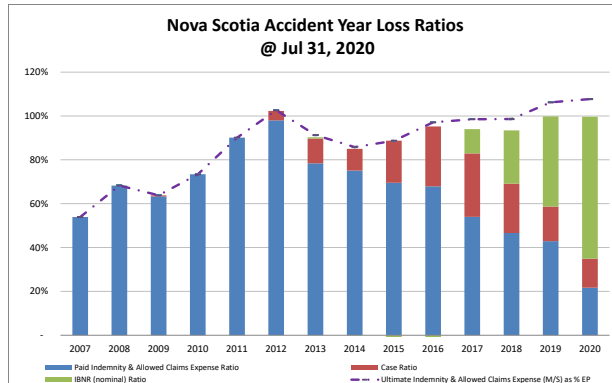
The **Nova Scotia Court of Appeal** confirmed, in a unanimous decision released on **January 18, 2019** in relation to **Sparks v Holland (2019 NSCA 3)**, that future Canada Pension Plan (CPP) disability benefits are deductible from future income loss awards in motor-vehicle accident claims in that province. Sparks sustained injuries as a result of a motor vehicle accident in Nova Scotia and sought damages for personal injuries and loss of income. The decision supported an earlier decision (*Tibbets v Murphy, 2017 NSCA 35*) that both past and future CPP disability benefits are deductible under section 133A of the Insurance Act. At the current time, no adjustments have been made to our valuation estimates as a result of this decision.

1.4 Current Provision Summary

The following charts show the current levels of claim liabilities² booked by accident year. The left chart displays life-to-date payments, case reserves, IBNR, and the total including actuarial present value adjustments against accident year earned premium. The right chart shows the associated dollar amounts for the components of the claim liabilities and the current projected amount of 2020 full year earned premium (the red hash-mark line) to provide some perspective.

¹This url to a pdf is to a helpful guide on how bills become laws: <https://www.ola.org/sites/default/files/common/how-bills-become-law-en.pdf>.

²Claim liabilities refer to provision for unpaid indemnity and allowed claims expenses. Allowed claims expenses are first party legal and other expenses as listed in the RSP Claims Guide. Claims expenses paid through the member company expense allowance are NOT included in this discussion.



“M/S” refers to “Member Statement” values – that is, actuarial present value adjustments at the selected discount rate.

The current actuarial present value adjustments balance (\$6.9 million – see the following table) represents 19% of the earned premium projected for the full year 2020 (see the upper right corner of the right chart above). If our current estimates of the nominal unpaid amounts prove to match actual claims payments, the actuarial present value adjustments will be released into the net operating result over future periods.

| claim liabilities (\$000s) | amt | % |
|----------------------------|---------------|---------------|
| case | 29,331 | 41.9% |
| ibnr | 33,885 | 48.4% |
| M/S apv adjust. | 6,857 | 9.8% |
| M/S total | 70,073 | 100.0% |

The table to the left breaks down the Member Statement (M/S) claim liabilities total into component parts, showing that the majority of the claim liabilities for this RSP is in case reserves. Approximately 75% of the IBNR balance relates to accident years 2019 and 2020 (see Exhibit B). Approximately 91% of the M/S total claim

liabilities are related to accident years 2016-2020 inclusive (i.e. the most recent 5 accident years), and just over 0% is related to accident years 2010 and prior (i.e. prior to the most recent 10 accident years).

The following tables summarize the premium liabilities and the total policy liabilities.

| premium liabilities (\$000s) | | | policy liabilities (\$000s) | | |
|------------------------------|---------------|---------------|-----------------------------|---------------|---------------|
| | amt | % | | amt | % |
| unearned prem | 19,823 | 88.6% | claim | 63,216 | 68.4% |
| prem def/(dpac) | 693 | 3.1% | premium | 20,516 | 22.2% |
| M/S apv adjust. | 1,868 | 8.3% | M/S apv adjust. | 8,725 | 9.4% |
| M/S total | 22,384 | 100.0% | M/S total | 92,457 | 100.0% |

2 Activity During the Month of July 2020

2.1 Recorded Premium and Claims Activity

The following table summarizes the extent to which premiums and claims amounts recorded during the month differ from projections reflected in the prior month’s Operational Report³.

³There may be rounding differences in values in this document compared with the associated Bulletin and/or Operational Report.

Nova Scotia RSP Actual vs Projected Summary: Recorded Transaction Amounts (\$ thousands)

| Accident Year | Earned Premium | | Paid Indemnity & Allowed Claims Expense | | Case increase / (decrease) | | Recorded increase / (decrease) | |
|---------------|----------------|-----------------------|---|-----------------------|----------------------------|-----------------------|--------------------------------|-----------------------|
| | Actual | Actual less Projected | Actual | Actual less Projected | Actual | Actual less Projected | Actual | Actual less Projected |
| Prior | (3) | (3) | 433 | 181 | (526) | (328) | (94) | (148) |
| 2018 | (3) | (3) | 84 | (175) | 173 | 154 | 257 | (21) |
| 2019 | (5) | (5) | 112 | (236) | (94) | (122) | 18 | (358) |
| 2020 | 3,115 | 26 | 754 | (130) | 383 | (228) | 1,137 | (357) |
| TOTAL | 3,103 | 14 | 1,383 | (361) | (64) | (524) | 1,319 | (884) |

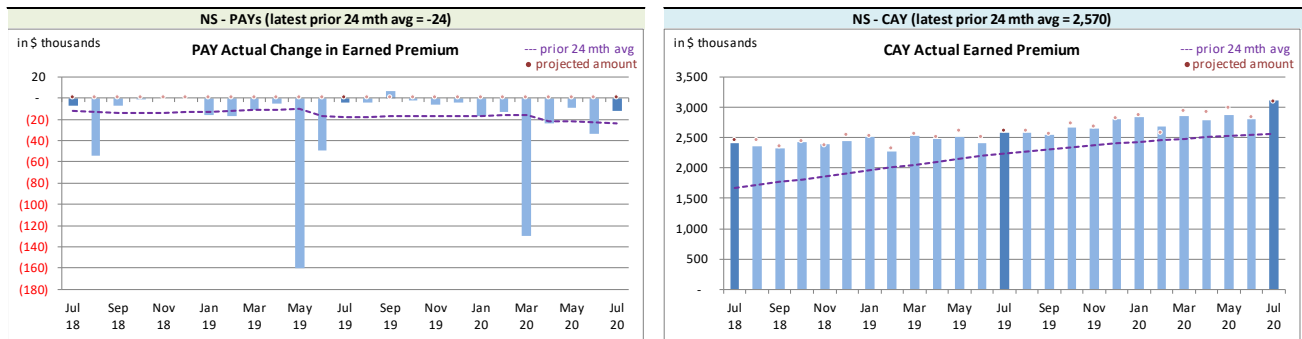
(Recorded transaction amounts exclude IBNR & other actuarial provisions)

Claims transaction activity is generally volatile and changes from one month to the next are anticipated due to this natural “process variance” (i.e. random variation), and this is particularly true where volumes are low as found in this RSP. Each month, the projection variances are reviewed for signs of projection bias and to identify potential ways to reduce the level of the variance. Commentary from our review is provided in the sub-sections that follow.

2.1.a Actual vs. Projected (AvsP): Earned Premium

The following charts show actual **earned premium**⁴ activity in each of the most recent 25 calendar months, along with a “prior 24-month average” to show how each month’s actual compares with the average amount of the preceding 24 calendar months.

Nova Scotia RSP Actual **Earned Premium** by Calendar Month



Earned premium changes during a given calendar month in relation to prior accident years tend to be at modest levels, although relatively high levels generally occur at the beginning of each year.

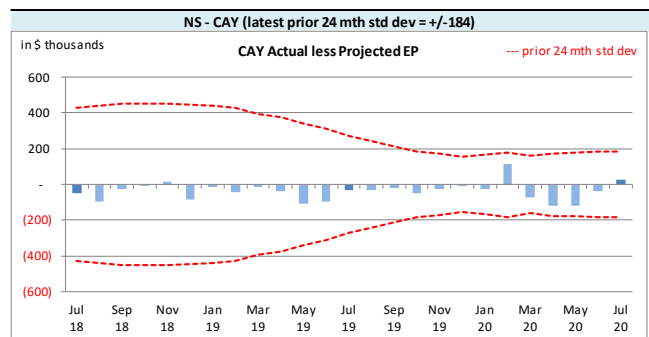
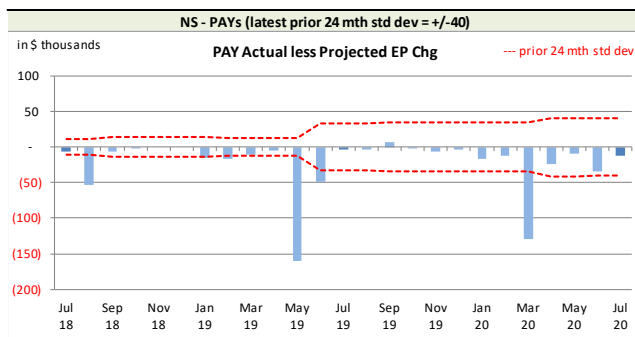
⁴Premium is earned on a daily basis based on the transaction term measured in days. As a result, months with 31 days earned relatively more than those with 30 days, and February earns the least.

| On Latest \$ thousands | | |
|----------------------------------|--------|--------|
| Earned Premium | PAYs | CAY |
| Mthly Avg EP Chg (prior 24 mths) | (24) | 2,570 |
| std dev | 40 | 184 |
| A-P <> std dev | 6 | - |
| % <> std dev | 24.0% | 0.0% |
| norm <> std dev | 31.7% | 31.7% |
| performance vs 24-mth avg: | better | better |

The associated variance between the actual changes and the projections from the previous month are shown in the following charts. **Earned premium** change projections are all attributed to the current accident year as the projection upload does not accept **earned premium** changes for other accident years. We do not see this limitation as being significant for our purposes, but it does mean that

the actual less projection variance will equal the actual **earned premium** change in relation to prior accident years.

*Nova Scotia RSP Actual vs. Projected Summary: **Earned Premium** Variances by Calendar Month*



We project **earned premium** changes from known unearned premium balances and projected written premium levels, but upload the total projections as current accident year (CAY). This process has generated prior accident years’ (PAYs) bias⁵, with actuals generally lower than projected, although the magnitude is not high relative to monthly premium. In addition to the PAYs’ bias, the CAY has also shown bias⁶, with actuals being generally lower than projected, and while we modified our projection processes in response, bias still exists. Over time, we may consider other projection approaches to address the bias issue, but it is not currently deemed as priority.

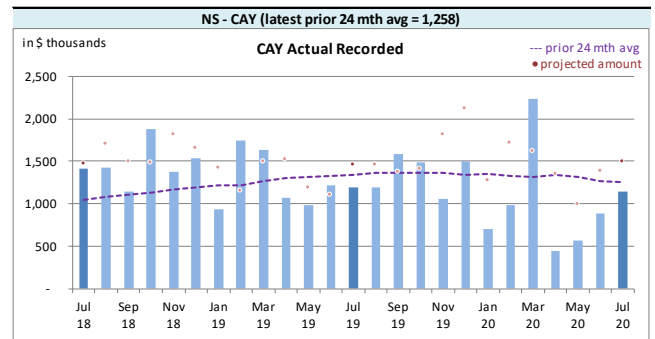
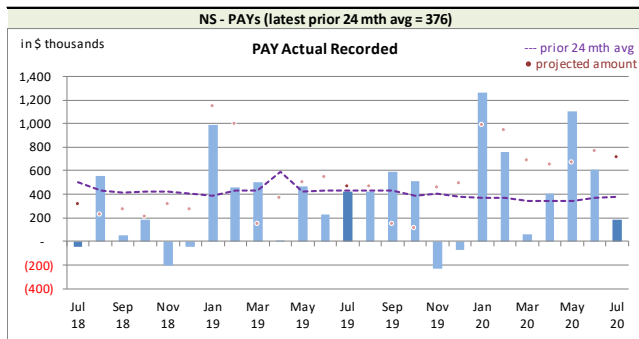
2.1.b AvsP: Recorded Indemnity & Allowed Claims Expense

The following charts show actual **recorded** activity (**paid** and case reserve changes), in each of the most recent 25 calendar months, along with a “prior 24-month average” to show how each month’s actual compares with the average amount of the preceding 24 calendar months.

*Nova Scotia RSP Actual **Recorded** by Calendar Month*

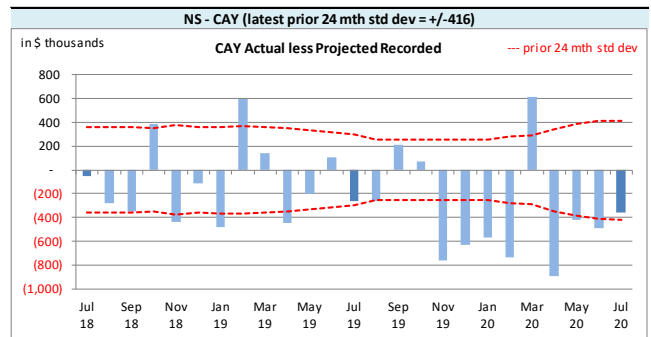
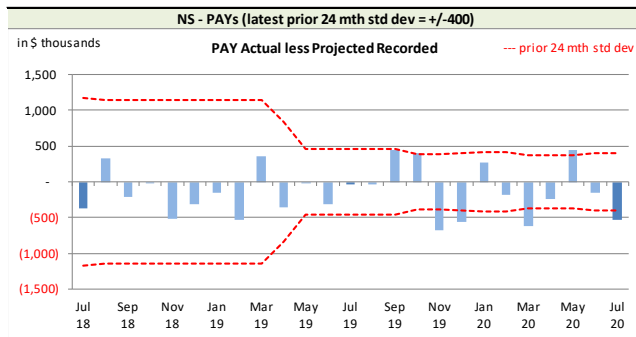
⁵The PAYs’ variances will show bias as the projection upload forces all earned premium projections to be attributed to the CAY.

⁶We measure bias based on a 95% confidence range for a binominal distribution with trials based on the range being considered (25 in this case) and 50% probability of success. The rolling 25-month CAY variances at June 2020 has only 3 months where the actuals were higher than projected, and as the 95% confidence range is 8 to 17, bias continues to be indicated.



Recorded activity variances from the previous month’s projections are shown in the following charts, including the “prior 24-month standard deviation” levels to show how the variances from projection compare with historical standard deviations.

*Nova Scotia RSP Actual vs Projected Summary: **Recorded** Variances by Calendar Month*



| On Latest \$ thousands | | |
|------------------------------------|--------|-------|
| Recorded | PAYs | CAY |
| Mthly Avg Recorded (prior 24 mths) | 376 | 1,258 |
| std dev | 400 | 416 |
| A-P <> std dev | 6 | 14 |
| % <> std dev | 24.0% | 56.0% |
| norm <> std dev | 31.7% | 31.7% |
| performance vs 24-mth avg: | better | worse |

With respect to **recorded** indemnity & allowed claims expense activity, caution must be exercised in reviewing the variances as this is a small pool and single claim transactions that are normal course for the business may look unusual and generate relatively significant variances that in nominal value terms are not that significant in relative or overall terms. That said, 24% of prior accident

years’ (PAYs) **recorded** variances over the last 25 calendar months have fallen outside of one standard deviation of the actual **recorded** amounts (see the preceding table), suggesting the projection process has performed better than simply projecting the prior 24-month average amount (assuming it follows a normal distribution). Bias has been indicated at a 95% confidence level on a rolling 25-month basis (6 of 25 variances are positive).

The PAY **recorded** variance was outside of the one standard deviation band this month (see preceding chart on the right). The lower than projected recorded activity was reviewed, and attributed to process variance.

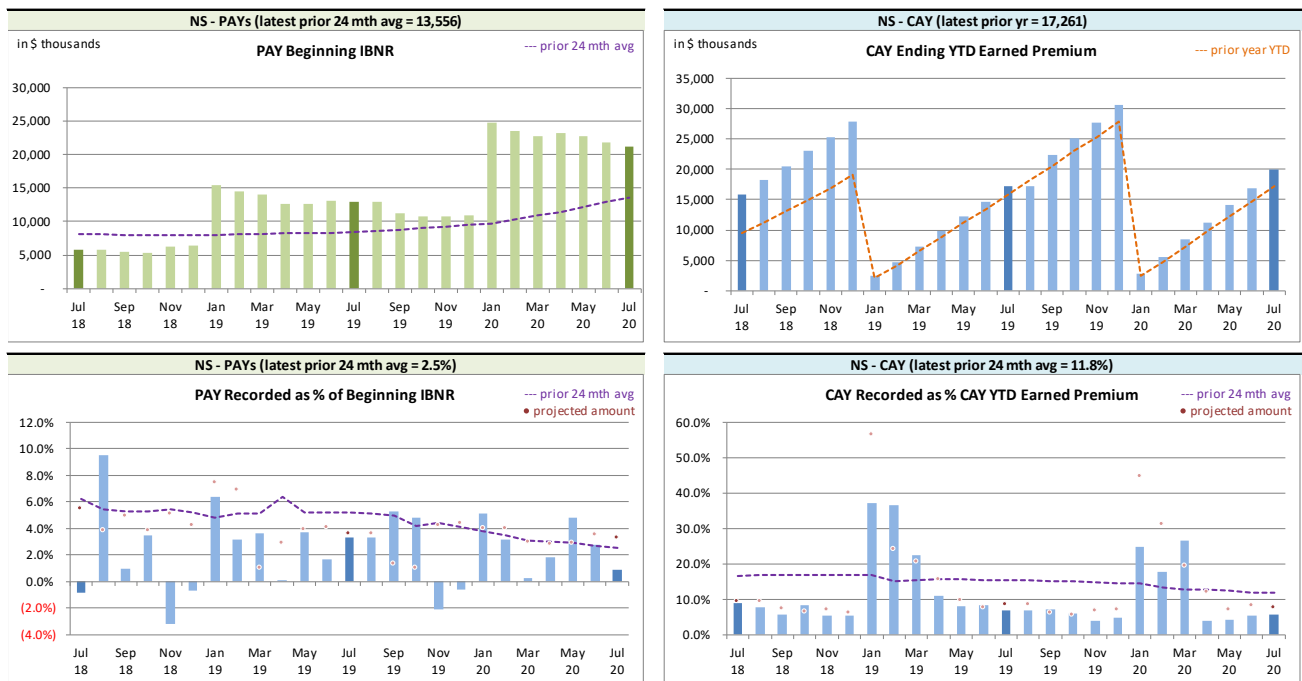
The current accident year (CAY) **recorded** variances fell outside of one standard deviation 56% of the time over the last 25 calendar months (see preceding table on the left), suggesting that the projection process has performed worse than simply projecting the prior 24-month average amount. We are considering ways to improve our projection process as a result, but efforts so far have fallen short.

Bias has been indicated at a 95% confidence level on a rolling 25-month basis (7 of 25 variances are positive).

The method for establishing IBNR adjusts automatically for changes in **earned premium** and **recorded** claims activity level (see sections 2.2 and 3).

We have included, for reference, the following charts related to levels influencing **recorded** activity. Note in particular the increase in the level of PAY beginning IBNR. Part of this will be as a response to valuations and showing up as a beginning IBNR change one month after the valuation is implemented (i.e. April, June, September, and November), and part will also reflect the maturity level of the RSP.

Nova Scotia RSP Levels that influence⁷ Recorded activity by Calendar Month



We track PAY beginning IBNR as **recorded** activity comes out of IBNR. Changes in the PAY beginning IBNR (see upper left of the preceding group of charts) occur for several possible reasons:

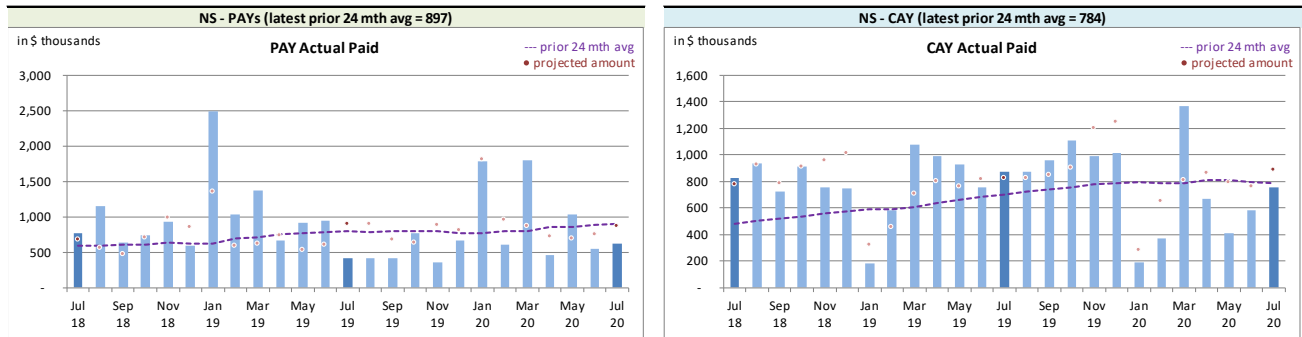
- to offset actual **recorded** activity (through loss ratio matching);
- the annual switchover as a CAY becomes a PAY (occurs in January); and
- when a new valuation is implemented, where the valuation resulted in changes to the selection of PAYs' ultimates (will show up as a beginning IBNR change one month after the valuation is implemented, i.e. the change will generally show in April, June, September, and November).

⁷Our recorded activity projections for the prior accident years are based on selected ratios of recorded activity to beginning unpaid balances, whereas the current accident year projections are based on selected ratios of year-to-date IBNR to year-to-date selected ultimate (i.e. selected LR x earned premium), deriving year-to-date recorded as selected ultimate less IBNR. In both cases, the ratio selection is based on our review of the more recent recorded activity and recent AvsP analyses.

2.1.c AvsP: Paid Indemnity & Allowed Claims Expense

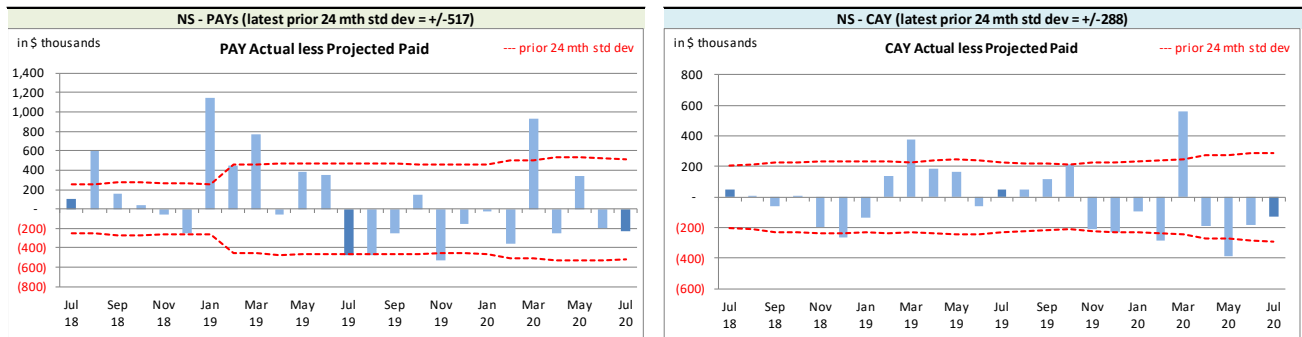
The following charts show actual **paid** activity in each of the most recent 25 calendar months, along with a “prior 24-month average” to show how each month’s actual compares with the average amount of the preceding 24 calendar months.

Nova Scotia RSP Actual Paid by activity Calendar Month



Paid activity variances from the previous month’s projections are shown in the following charts, including the “prior 24-month standard deviation” levels to show how the variances from projection compare with historical standard deviations.

Nova Scotia RSP Actual vs Projected Summary: Paid Variances by Calendar Month



| On Latest \$ thousands | | |
|--------------------------------|-----------|-----------|
| Paid | PAYS | CAY |
| Mthly Avg Paid (prior 24 mths) | 897 | 784 |
| std dev | 517 | 288 |
| A-P <> std dev | 7 | 7 |
| % <> std dev | 28.0% | 28.0% |
| norm <> std dev | 31.7% | 31.7% |
| performance vs 24-mth avg: | no better | no better |

With respect to **paid** indemnity & allowed claims expense activity, caution must be exercised in reviewing the variances as this is a small pool and single claim transactions that are normal course for the business may look unusual and generate relatively significant variances that in nominal value terms are not that significant in relative or overall terms. That said, 28% of the prior accident

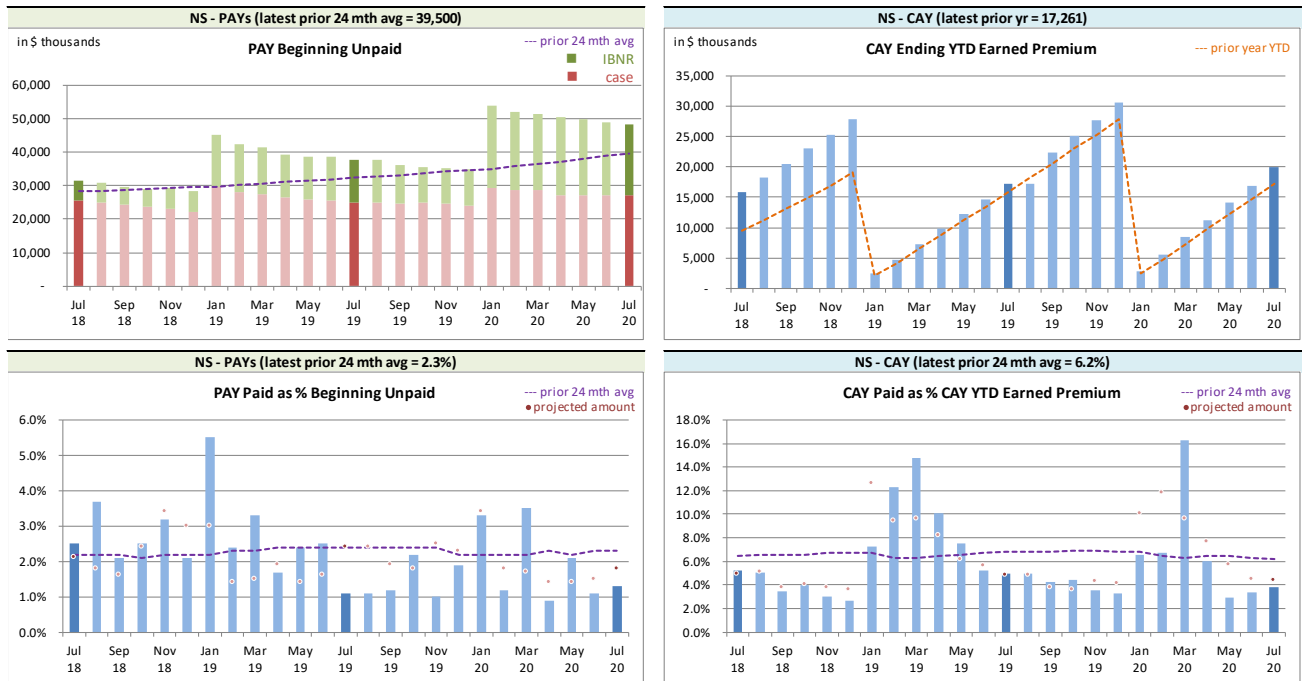
years’ (PAYS) variances over the last 25 calendar months have fallen outside of one standard deviation of the actual **paid** amounts (see preceding table on the left), suggesting the projection process has performed no better than simply projecting the prior 24-month average amount (assuming it follows a normal distribution). Bias has not been indicated at a 95% confidence level on a rolling 25-month basis (12 of 25 variances are positive).

The current accident year (CAY) **paid** variances fell outside of one standard deviation 28% of the time

over the last 25 calendar months (see the preceding table), suggesting that the projection process has performed no better than simply projecting the prior 24-month average amount. Bias has not been indicated at a 95% confidence level on a rolling 25-month basis (12 of 25 variances are positive).

We have included, for reference, the following charts related to levels influencing **paid** activity. Both case and IBNR increases contribute to the increase of PAY beginning unpaid. This is somewhat expected, given the maturity level of the RSP.

Nova Scotia RSP Levels that influence⁸ Paid activity by Calendar Month



We track the PAY beginning unpaid balance (case and IBNR) as **paid** activity comes out of the unpaid balance. Changes in the PAY beginning unpaid balance (see upper left of the preceding group of charts) occur for several possible reasons:

- to offset actual **paid** activity (may reduce case or IBNR or both);
- the annual switchover as a CAY becomes a PAY (occurs in January); and
- when a new valuation is implemented, where the valuation resulted in changes to the selection of PAYs’ ultimates (will show up as a beginning unpaid balance change one month after the valuation is implemented, i.e. the change will generally show in April, June, September, and November).

2.2 Actuarial Provisions

An ultimate loss ratio matching method (described in section 3) was used to determine the month’s

⁸Our paid projections for the prior accident years are based on selected ratios of paid to beginning unpaid balances, whereas the current accident year projections are based on selected ratios of year-to-date paid to year-to-date selected ultimate indemnity (i.e. selected LR x earned premium). In both cases, the ratio selection is based on our review of the more recent recorded activity and recent AvsP analyses.

IBNR⁹, and factors were applied to the nominal unpaid claims liability (case plus IBNR) to determine the discount amount (shown as a negative value to indicate its impact of reducing the liability) and the Provisions for Adverse Deviations. The loss ratios and the factors used to determine the current month’s provisions and projections were based on the applicable valuation.

The following table summarizes variances in provisions included in this month’s Operational Report and the associated one-month projections from last month’s Report.

Nova Scotia RSP Actual vs Projected Summary: IBNR and APV Amounts (\$ thousands)

| Table 02 | | actuarial present value adjustments | | | | | | |
|---------------|---------------|-------------------------------------|--------------|-----------------------|--------------|-----------------------------------|---------------|--|
| | | IBNR | | Discount Amount | | Provisions for Adverse Deviations | | IBNR + actuarial present value adjustments |
| Accident Year | Actual | Actual less Projected | Actual | Actual less Projected | Actual | Actual less Projected | Actual | Actual less Projected |
| Prior | 1,781 | 144 | (190) | 1 | 2,058 | (24) | 3,649 | 121 |
| 2018 | 6,701 | 17 | (193) | (2) | 1,638 | 21 | 8,146 | 36 |
| 2019 | 12,497 | 353 | (294) | (4) | 2,213 | 30 | 14,416 | 379 |
| 2020 | 12,906 | 383 | (311) | (3) | 1,936 | 20 | 14,531 | 400 |
| TOTAL | 33,885 | 897 | (988) | (8) | 7,845 | 47 | 40,742 | 936 |

The IBNR provision is \$0.9 million higher than projected from last month, counterbalancing the recorded claims activity and adjusting for the earned premium variance impacts indicated in section 2.1.

Exhibit G shows the accident year IBNR amount change from last month to this month broken down into:

- (i) the change projected last month;
- (ii) the additional change due to variances in earned premium (because we apply a loss ratio to earned premium in determining ultimate level) and/or recorded claims (as IBNR is calculated as ultimate less recorded) differences; and
- (iii) the additional change due to valuation implementation impacts (as applicable)

The variances associated with (ii) above are discussed in sections 2.1.a and 2.1.b.

The following table summarizes the variances in the provisions for premium deficiency liability / (deferred policy acquisition cost asset) included this month’s Operational Report and the one-month projections from last month’s Report. This RSP is in a premium deficiency position (shown as a positive amount) prior to and after actuarial present value adjustments. Actuarial present value adjustments increase the liability value as the adjustments increase the expected future policy obligations (costs) associated with the unearned premium. The variances noted are mainly driven by the unearned premium variance.

⁹For ease of discussion, “IBNR” is used in place of “provisions for incurred but not recorded (IBNR) and development”.

Nova Scotia RSP Actual vs Projected Summary: Premium Deficiency / (DPAC) Amounts (\$ thousands)

Table 03

| | Premium Deficiency / (Deferred Policy Acquisition Costs) | | actuarial present value adjustments | | Premium Deficiency / (DPAC) including actuarial present value adjustments | |
|--------------------------------|--|--------------------------|--|--------------------------|--|--------------------------|
| | Actual | Actual less Projected | Actual | Actual less Projected | Actual | Actual less Projected |
| balance: | 693 | 52 | 1,868 | 113 | 2,561 | 165 |
| balance as % unearned premium: | 3.5% | 0.1% | 9.4% | (0.1%) | 12.9% | - |
| actual unearned premium: | 19,823 | | | | | |
| less projected: | 1,178 | | | | | |

3 Ultimate Loss Ratio Matching Method

An “ultimate loss ratio matching method” continues to be applied to the current month and two projected months shown in the Operational Reports, with IBNR determined by accident year as follows:

- (a) Earned premium to-date
- (b) Ultimate loss¹⁰ ratio per latest valuation
- (c) Estimated ultimate incurred = (a) x (b)
- (d) Recorded indemnity & allowed claims expense to-date
- (e) IBNR = (c) – (d)

4 Calendar Year-to-Date Results

The following table summarizes the calendar year-to-date results for indemnity & allowed claims expenses¹¹, including IBNR.

In calculating the amounts as percentages of earned premium, the calendar year-to-date earned premium has been used, which includes not only the earned premium associated with the current accident year, but also earned premium adjustments related to prior accident years. Specifically, the current accident year (CAY) ratio in the table is 100.8% rather than 99.6% (the valuation ultimate ratio for accident year 2020), as the calendar year-to-date earned premium includes prior accident year earned premium adjustments. (Note that the ratios in this table may differ slightly from those shown in the Nova Scotia RSP Summary of Operations due to rounding.)

¹⁰“Loss” here refers to indemnity and allowed claims expenses, but does not include the claims expense allowance included in member company overall expense allowances (“Expense Allowance” in the Operational Report).

¹¹Allowed claims expenses are first party legal and other expenses as listed in the RSP Claims Guide. Claims expenses paid through the member company expense allowance are NOT included in this analysis.

Nova Scotia RSP Calendar Year-to-Date Indemnity & Allowed Claims Expense Summary (\$ thousands)

| Table 04 | YTD Nominal Values | | YTD actuarial present value adjustment | | YTD Total | | Change from Prior Month YTD | |
|----------|--------------------|--------|--|-------|-----------|--------|-----------------------------|--------|
| | Amount | % EP | Amount | % EP | Amount | % EP | Amount | LR pts |
| PAYs | 610 | 3.1% | 735 | 3.7% | 1,345 | 6.8% | (84) | (1.8%) |
| CAY | 19,873 | 100.8% | 1,625 | 8.2% | 21,498 | 109.1% | 3,349 | (0.2%) |
| TOTAL | 20,482 | 103.9% | 2,360 | 12.0% | 22,842 | 115.9% | 3,266 | (2.0%) |

(“% EP” based on 2020 calendar year-to-date earned premium; ratios may not total due to rounding)

In general, prior accident years (PAYs) changes from last month are due to the release of the actuarial present value adjustments with claims payments, except when valuations are implemented. The loss ratio change year-to-date in Table 04 reflects not only changes in the prior accident year levels, but also the increase in the calendar year-to-date earned premium with an additional month’s earned premium.

For the current accident year (CAY), changes in the year-to-date total reflects the additional month’s exposure and regular changes to actuarial present value adjustments as the year ages.

5 Current Operational Report – Additional Exhibits

Section 6 provides exhibits pertaining to the actuarial provisions reflected in the current month’s Operational Report.

IBNR (including actuarial present value adjustments) presented in section 6, Exhibit A, were derived on a discounted basis, and therefore reflect the time value of money and include an explicit provision for adverse deviations in accordance with accepted actuarial practice in Canada.

IBNR presented in section 6, Exhibit B, does NOT include any actuarial present value adjustments. The “Total IBNR” from this exhibit is shown in the Operational Report as “Undiscounted IBNR”.

The ultimate loss ratios detailed in section 6, Exhibit B, refer to the estimates derived on the basis of various actuarial methodologies applied to the experience of the Nova Scotia Risk Sharing Pool for the purposes of the most recent quarterly valuation. As discussed in section 3, IBNR reflected in the current month’s Operational Report was derived as the difference between the estimated ultimate for the claims amount (i.e. earned premium x ultimate loss ratio) and the associated current recorded amounts (life-to-date payments plus current case reserves).

6 EXHIBITS

The exhibits listed below are provided on the pages that follow:

- EXHIBIT A IBNR for Member Sharing – includes Actuarial Present Value Adjustments
- EXHIBIT B IBNR
- EXHIBIT C Premium Liabilities
- EXHIBIT D Projected Year-end Policy Liabilities
- EXHIBIT E Discount Rate & Margins for Adverse Deviations
- EXHIBIT F Interest Rate Sensitivity
- EXHIBIT G Components of IBNR Change During Month

EXHIBIT A

IBNR for Member Sharing – includes Actuarial Present Value Adjustments

TABLE EXHIBIT A

| | | Amounts in \$000s | | | | | |
|--|--------------|-------------------|------------------|------------------|---------------------|---------------------|---------------------|
| IBNR + M/S actuarial present value adjustments | | Accident Year | Actual Jun. 2020 | Actual Jul. 2020 | Projected Aug. 2020 | Projected Sep. 2020 | Projected Dec. 2020 |
| | 2007 | | (1) | (1) | (1) | (1) | (1) |
| | 2008 | | 2 | 9 | 9 | 9 | 9 |
| | 2009 | | 11 | 11 | 11 | 11 | 11 |
| | 2010 | | 4 | 4 | 4 | 4 | 4 |
| | 2011 | | 4 | 4 | 4 | 4 | 4 |
| | 2012 | | 47 | 46 | 45 | 46 | 44 |
| | 2013 | | 174 | 227 | 224 | 222 | 211 |
| | 2014 | | 115 | 110 | 109 | 108 | 104 |
| discount rate | 2015 | | 16 | (1) | (1) | (2) | 8 |
| 0.62% | 2016 | | 424 | 286 | 290 | 291 | 253 |
| | 2017 | | 2,811 | 2,954 | 2,903 | 2,833 | 2,658 |
| interest rate margin | 2018 | | 8,417 | 8,146 | 7,917 | 7,695 | 7,083 |
| 25 basis pts | 2019 | | 14,452 | 14,416 | 14,128 | 13,968 | 12,949 |
| | 2020 | | 12,319 | 14,531 | 16,049 | 17,398 | 17,195 |
| | TOTAL | | 38,795 | 40,742 | 41,691 | 42,586 | 40,532 |
| | Change | | | 1,947 | 949 | 895 | |

Please see Exhibit G, page 1 for Components of Change during Current Month

EXHIBIT B
IBNR

TABLE EXHIBIT B

Amounts in \$000s

IBNR

| Ultimate Loss Ratio | Accident Year | Actual Jun. 2020 | Actual Jul. 2020 | Projected Aug. 2020 | Projected Sep. 2020 | Projected Dec. 2020 |
|------------------------|------------------|---------------------|---------------------|------------------------|------------------------|------------------------|
| 53.9% | 2007 | (1) | (1) | (1) | (1) | (1) |
| 68.3% | 2008 | 2 | 8 | 8 | 8 | 8 |
| 63.8% | 2009 | 5 | 5 | 5 | 5 | 5 |
| 73.4% | 2010 | 4 | 4 | 4 | 4 | 4 |
| 90.1% | 2011 | 4 | 4 | 4 | 4 | 4 |
| 102.2% | 2012 | (4) | (5) | (5) | (5) | (5) |
| 90.2% | 2013 | 22 | 76 | 75 | 74 | 69 |
| 84.9% | 2014 | (6) | (10) | (10) | (10) | (10) |
| 87.1% | 2015 | (217) | (230) | (228) | (226) | (208) |
| 94.1% | 2016 | (58) | (165) | (155) | (150) | (142) |
| 94.0% | 2017 | 1,940 | 2,095 | 2,053 | 1,991 | 1,860 |
| 93.4% | 2018 | 6,962 | 6,701 | 6,500 | 6,305 | 5,776 |
| 99.9% | 2019 | 12,520 | 12,497 | 12,247 | 12,125 | 11,180 |
| 99.6% | 2020 | 10,940 | 12,906 | 14,189 | 15,307 | 14,502 |
| | TOTAL | 32,113 | 33,885 | 34,686 | 35,431 | 33,042 |
| | Change | | 1,772 | 801 | 745 | |

Please see Exhibit G, page 2 for Components of Change during Current Month

EXHIBIT C

Premium Liabilities

| TABLE EXHIBIT C | Amounts in \$000s | | | | |
|--|---------------------|---------------------|------------------------|------------------------|------------------------|
| | Actual Jun. 2020 | Actual Jul. 2020 | Projected Aug. 2020 | Projected Sep. 2020 | Projected Dec. 2020 |
| Premium Liabilities | | | | | |
| (1) unearned premium (UP) | 18,171 | 19,823 | 20,839 | 22,172 | 23,355 |
| FOR MEMBER SHARING | | | | | |
| (2) expected future costs ratio {% of (1)} | 112.1% | 112.9% | 113.8% | 114.7% | 117.7% |
| (3) expected future costs {(1) x (2)} | 20,371 | 22,384 | 23,712 | 25,428 | 27,479 |
| (4) premium deficiency / (deferred policy acquisition cost) | 2,200 | 2,561 | 2,873 | 3,256 | 4,124 |
| Excluding Actuarial Present Value Adjustments | | | | | |
| (5) expected future costs ratio {% of (1)} | 102.8% | 103.5% | 104.3% | 105.1% | 107.8% |
| (6) expected future costs {(1) x (5)} | 18,672 | 20,516 | 21,732 | 23,305 | 25,185 |
| (7) premium deficiency / (deferred policy acquisition cost) | 501 | 693 | 893 | 1,133 | 1,830 |

EXHIBIT D

Projected Year-end Policy Liabilities

The table below presents the projected policy liabilities as at December 31, 2020, broken down by component.

| Nova Scotia ending 2020 | | Projected Balances as at Dec. 31, 2020 (\$000s) | | | | | | | | | |
|--|---------------------|---|--------------------|--|--------------------|--------------------------------|------------------------------|---------------------|--------------|----------------|--|
| Acc Yr | nominal values | | | actuarial present value adjustments (apvs) | | | | | | TOTAL | |
| | Case | IBNR | Total Unpaid | discount | investment PfAD | nominal development PfAD | development PfAD discount | development PfAD | Total apvs | | |
| 2007 | - | (1) | (1) | - | - | - | - | - | - | (1) | |
| 2008 | - | 8 | 8 | - | - | 1 | - | 1 | 1 | 9 | |
| 2009 | 63 | 5 | 68 | (1) | - | 7 | - | 7 | 6 | 74 | |
| 2010 | - | 4 | 4 | - | - | - | - | - | - | 4 | |
| 2011 | - | 4 | 4 | - | - | - | - | - | - | 4 | |
| 2012 | 532 | (5) | 527 | (5) | 2 | 53 | (1) | 52 | 49 | 576 | |
| 2013 | 1,466 | 69 | 1,535 | (17) | 8 | 153 | (2) | 151 | 142 | 1,677 | |
| 2014 | 1,230 | (10) | 1,220 | (12) | 5 | 122 | (1) | 121 | 114 | 1,334 | |
| 2015 | 2,530 | (208) | 2,322 | (21) | 7 | 232 | (2) | 230 | 216 | 2,538 | |
| 2016 | 3,550 | (142) | 3,408 | (34) | 14 | 419 | (4) | 415 | 395 | 3,803 | |
| 2017 | 5,161 | 1,860 | 7,021 | (84) | 35 | 857 | (10) | 847 | 798 | 7,819 | |
| 2018 | 5,884 | 5,776 | 11,660 | (175) | 70 | 1,434 | (22) | 1,412 | 1,307 | 12,967 | |
| 2019 | 4,764 | 11,180 | 15,944 | (271) | 112 | 1,961 | (33) | 1,928 | 1,769 | 17,713 | |
| PAYs (sub-total): | 25,180 | 18,540 | 43,720 | (620) | 253 | 5,239 | (75) | 5,164 | 4,797 | 48,517 | |
| CAY (2020) | 11,239 | 14,502 | 25,741 | (515) | 206 | 3,063 | (61) | 3,002 | 2,693 | 28,434 | |
| claims liabilities: | 36,419 | 33,042 | 69,461 | (1,135) | 459 | 8,302 | (136) | 8,166 | 7,490 | 76,951 | |
| | Unearned Premium | Premium Deficiency / (DPAC) | Total Provision | discount | investment PfAD | nominal development PfAD | development PfAD discount | development PfAD | Total apvs | TOTAL* | |
| premium liabilities: | 23,355 | 1,830 | 25,185 | (423) | 174 | 2,587 | (44) | 2,543 | 2,294 | 27,479 | |
| *Total may not be sum of parts, as apvs apply to future costs within UPR | | | | | | | | | | | |
| policy liabilities: | | | 94,646 | (1,558) | 633 | 10,889 | (180) | 10,709 | 9,784 | 104,430 | |

EXHIBIT E

Discount Rate & Margins for Adverse Deviations

The tables below present selected margins for adverse development by coverage (the total is a weighted average, based on the unpaid claims projection for December 31, 2020 from the valuation), followed by the selected discount rate and the associated margin for investment income.

Selected Claims Development MfADs (Mar. 31,
2020)

| Accident Year | Third Party Liability Margins | Accident Benefits Margins | Other Coverages Margins | Total Margins |
|------------------|-------------------------------------|---------------------------------|-------------------------------|------------------|
| 2007 | 10.0% | 10.0% | 10.0% | 10.0% |
| 2008 | 10.0% | 10.0% | 10.0% | 10.0% |
| 2009 | 10.0% | 10.0% | 10.0% | 10.0% |
| 2010 | 10.0% | 10.0% | 10.0% | 10.0% |
| 2011 | 10.0% | 10.0% | 10.0% | 10.0% |
| 2012 | 10.0% | 10.0% | 10.0% | 10.0% |
| 2013 | 10.0% | 10.0% | 10.0% | 10.0% |
| 2014 | 10.0% | 10.0% | 10.0% | 10.0% |
| 2015 | 10.0% | 10.0% | 10.0% | 10.0% |
| 2016 | 12.5% | 10.0% | 12.5% | 12.3% |
| 2017 | 12.5% | 10.0% | 8.9% | 12.2% |
| 2018 | 12.5% | 10.0% | 10.6% | 12.3% |
| 2019 | 12.5% | 10.0% | 9.1% | 12.3% |
| 2020 | 12.4% | 10.0% | 5.5% | 11.9% |
| 2021 | 12.5% | 10.0% | 12.5% | 12.5% |
| <u>prem liab</u> | <u>12.0%</u> | <u>10.0%</u> | <u>5.1%</u> | <u>10.4%</u> |

discount rate: 0.62%
margin (basis points): 25

EXHIBIT F

Interest Rate Sensitivity

The tables below present sensitivity to the member statement claims liability as projected to Dec. 31, 2020 from the latest valuation date (projections in exhibits A to D are to Dec. 31, 2020, and are based on more up-to-date information). We have included the most recent valuation selection (0.62%), the prior valuation assumption (1.64%) and the prior fiscal year end valuation assumption (1.46%) for comparative purposes. A 25 basis point margin for investment return adverse deviation is used in all scenarios presented.

\$ Format: \$000s

| Actuarial Present Value of Provisions at Various Discount Rates - Dec. 31, 2020 projected Unpaid | | | | | | | | |
|--|---------------|---------------|---------------------|---------------|---------------|---------------|----------------------|--------------------------|
| AY | 0.00% | 0.12% | 0.62% | 1.12% | 1.62% | 2.12% | 1.64% | 1.46% |
| 2007 | - | - | - | - | - | - | - | - |
| 2008 | - | - | - | - | - | - | - | - |
| 2009 | 59 | 59 | 58 | 58 | 58 | 57 | 58 | 58 |
| 2010 | - | - | - | - | - | - | - | - |
| 2011 | - | - | - | - | - | - | - | - |
| 2012 | 425 | 425 | 423 | 419 | 416 | 412 | 416 | 417 |
| 2013 | 1,118 | 1,118 | 1,110 | 1,101 | 1,091 | 1,082 | 1,091 | 1,094 |
| 2014 | 621 | 621 | 617 | 612 | 607 | 603 | 607 | 609 |
| 2015 | 2,229 | 2,229 | 2,216 | 2,199 | 2,183 | 2,167 | 2,182 | 2,188 |
| 2016 | 3,748 | 3,748 | 3,724 | 3,693 | 3,663 | 3,634 | 3,662 | 3,673 |
| 2017 | 7,033 | 7,032 | 6,978 | 6,909 | 6,842 | 6,776 | 6,839 | 6,864 |
| 2018 | 12,389 | 12,385 | 12,273 | 12,130 | 11,991 | 11,855 | 11,986 | 12,036 |
| 2019 | 18,480 | 18,474 | 18,277 | 18,025 | 17,781 | 17,545 | 17,772 | 17,860 |
| 2020 | 27,992 | 27,980 | 27,639 | 27,203 | 26,779 | 26,371 | 26,761 | 26,915 |
| Total | 74,094 | 74,071 | 73,315 | 72,349 | 71,411 | 70,502 | 71,374 | 71,714 |
| | curr - 100 bp | curr - 50 bp | curr val assumption | curr + 50bp | curr + 100bp | curr + 150bp | prior val assumption | prior fyr end assumption |

| Dollar Impact Relative to Valuation Assumption | | | | | | | | |
|--|---------------|--------------|---------------------|-------------|--------------|--------------|----------------------|--------------------------|
| AY | 0.00% | 0.12% | 0.62% | 1.12% | 1.62% | 2.12% | 1.64% | 1.46% |
| Total | 779 | 756 | - | (966) | (1,904) | (2,813) | (1,941) | (1,601) |
| | curr - 100 bp | curr - 50 bp | curr val assumption | curr + 50bp | curr + 100bp | curr + 150bp | prior val assumption | prior fyr end assumption |

| Percentage Impact Relative to Valuation Assumption | | | | | | | | |
|--|---------------|--------------|---------------------|---------------|---------------|---------------|----------------------|--------------------------|
| AY | 0.00% | 0.12% | 0.62% | 1.12% | 1.62% | 2.12% | 1.64% | 1.46% |
| 2007 | - | - | - | - | - | - | - | - |
| 2008 | - | - | - | - | - | - | - | - |
| 2009 | 1.7% | 1.7% | - | - | - | (1.7%) | - | - |
| 2010 | - | - | - | - | - | - | - | - |
| 2011 | - | - | - | - | - | - | - | - |
| 2012 | 0.5% | 0.5% | - | (0.9%) | (1.7%) | (2.6%) | (1.7%) | (1.4%) |
| 2013 | 0.7% | 0.7% | - | (0.8%) | (1.7%) | (2.5%) | (1.7%) | (1.4%) |
| 2014 | 0.6% | 0.6% | - | (0.8%) | (1.6%) | (2.3%) | (1.6%) | (1.3%) |
| 2015 | 0.6% | 0.6% | - | (0.8%) | (1.5%) | (2.2%) | (1.5%) | (1.3%) |
| 2016 | 0.6% | 0.6% | - | (0.8%) | (1.6%) | (2.4%) | (1.7%) | (1.4%) |
| 2017 | 0.8% | 0.8% | - | (1.0%) | (1.9%) | (2.9%) | (2.0%) | (1.6%) |
| 2018 | 0.9% | 0.9% | - | (1.2%) | (2.3%) | (3.4%) | (2.3%) | (1.9%) |
| 2019 | 1.1% | 1.1% | - | (1.4%) | (2.7%) | (4.0%) | (2.8%) | (2.3%) |
| 2020 | 1.3% | 1.2% | - | (1.6%) | (3.1%) | (4.6%) | (3.2%) | (2.6%) |
| Total | 1.1% | 1.0% | - | (1.3%) | (2.6%) | (3.8%) | (2.6%) | (2.2%) |
| | curr - 100 bp | curr - 50 bp | curr val assumption | curr + 50bp | curr + 100bp | curr + 150bp | prior val assumption | prior fyr end assumption |

EXHIBIT G

Page 1 of 2

Components of Member Statement IBNR (i.e. “Discounted”) Change During Month

RSP **Nova Scotia**
AccountCode Desc **IBNR - Discounted**

M/S IBNR - in \$000s

| AccYear | Values | | | | Sum of Total Change | Sum of % Total Change | Sum of Current Month Final Amount |
|--------------------|----------------------------------|-------------------------|-------------------------------------|---|---------------------|-----------------------|-----------------------------------|
| | Sum of Prior Month Actual Amount | Sum of Projected Change | Sum of Change Due to AvsP Variances | Sum of Change Due to Valuation Implementation | | | |
| 2007 | (1) | - | - | - | - | - | (1) |
| 2008 | 2 | - | 7 | - | 7 | 350.0% | 9 |
| 2009 | 11 | - | - | - | - | - | 11 |
| 2010 | 4 | - | - | - | - | - | 4 |
| 2011 | 4 | - | - | - | - | - | 4 |
| 2012 | 47 | - | (1) | - | (1) | (2.1%) | 46 |
| 2013 | 174 | (3) | 56 | - | 53 | 30.5% | 227 |
| 2014 | 115 | (3) | (2) | - | (5) | (4.3%) | 110 |
| 2015 | 16 | (3) | (14) | - | (17) | (106.3%) | (1) |
| 2016 | 424 | (4) | (134) | - | (138) | (32.5%) | 286 |
| 2017 | 2,811 | (66) | 209 | - | 143 | 5.1% | 2,954 |
| 2018 | 8,417 | (307) | 36 | - | (271) | (3.2%) | 8,146 |
| 2019 | 14,452 | (415) | 379 | - | (36) | (0.2%) | 14,416 |
| 2020 | 12,319 | 1,812 | 400 | - | 2,212 | 18.0% | 14,531 |
| Grand Total | 38,795 | 1,011 | 936 | - | 1,947 | 5.0% | 40,742 |

EXHIBIT G

Page 2 of 2

Components of IBNR (i.e. “Undiscounted”) Change During Month

| RSP | | Nova Scotia | | | | | | IBNR - in \$000s |
|--------------------|----------------------------------|-------------------------|-------------------------------------|---|---------------------|-----------------------|---------------|-----------------------------------|
| AccountCode Desc | | IBNR - Undiscounted | | | | | | |
| AccYear | Values | | | | | | | Sum of Current Month Final Amount |
| | Sum of Prior Month Actual Amount | Sum of Projected Change | Sum of Change Due to AvsP Variances | Sum of Change Due to Valuation Implementation | Sum of Total Change | Sum of % Total Change | | |
| 2007 | (1) | - | - | - | - | - | (1) | |
| 2008 | 2 | - | 6 | - | 6 | 300.0% | 8 | |
| 2009 | 5 | - | - | - | - | - | 5 | |
| 2010 | 4 | - | - | - | - | - | 4 | |
| 2011 | 4 | - | - | - | - | - | 4 | |
| 2012 | (4) | - | (1) | - | (1) | 25.0% | (5) | |
| 2013 | 22 | - | 54 | - | 54 | 245.5% | 76 | |
| 2014 | (6) | - | (4) | - | (4) | 66.7% | (10) | |
| 2015 | (217) | 2 | (15) | - | (13) | 6.0% | (230) | |
| 2016 | (58) | 2 | (109) | - | (107) | 184.5% | (165) | |
| 2017 | 1,940 | (58) | 213 | - | 155 | 8.0% | 2,095 | |
| 2018 | 6,962 | (278) | 17 | - | (261) | (3.7%) | 6,701 | |
| 2019 | 12,520 | (376) | 353 | - | (23) | (0.2%) | 12,497 | |
| 2020 | 10,940 | 1,583 | 383 | - | 1,966 | 18.0% | 12,906 | |
| Grand Total | 32,113 | 875 | 897 | - | 1,772 | 5.5% | 33,885 | |